

# Set-Up Guide

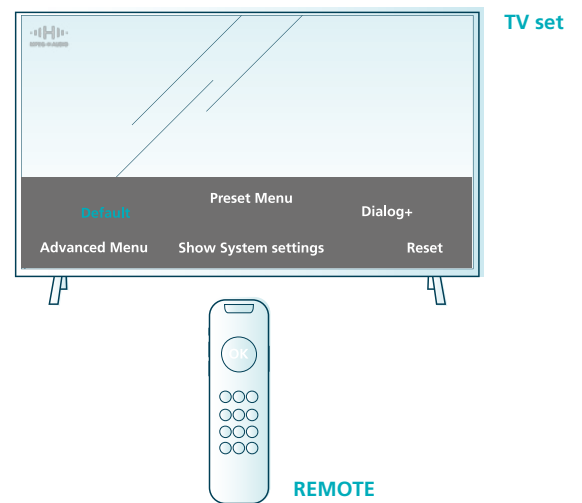
## HOW TO USE A TV WITH MPEG-H AUDIO INTEGRATION

If MPEG-H Audio is built into your TV, the TV remote can be used to operate its features. When setting up your TV, you can set your preferred language for TV commentary and dialog and adjust the sound's dynamic range to match your listening environment and preferences. Consult the TV manual to navigate to the MPEG-H Audio settings.

MPEG-H Audio delivers the full dynamic range produced by the content creator or broadcaster for a realistic home theater experience. By customizing your dynamic range profile, you can quieten down loud sounds and make quiet sounds louder. This helps when you don't want to disturb others with loud noises or watch in a loud environment that can mask quiet sequences.

In case creator and broadcaster include interactivity into the MPEG-H Audio content, you can directly access these features on an MPEG-H Audio enabled TV. This includes the selection of your favorite commentator, changing the film's language, and even adjusting the dialog level. Your TV will carry the settings over ad breaks as well as channel switches.

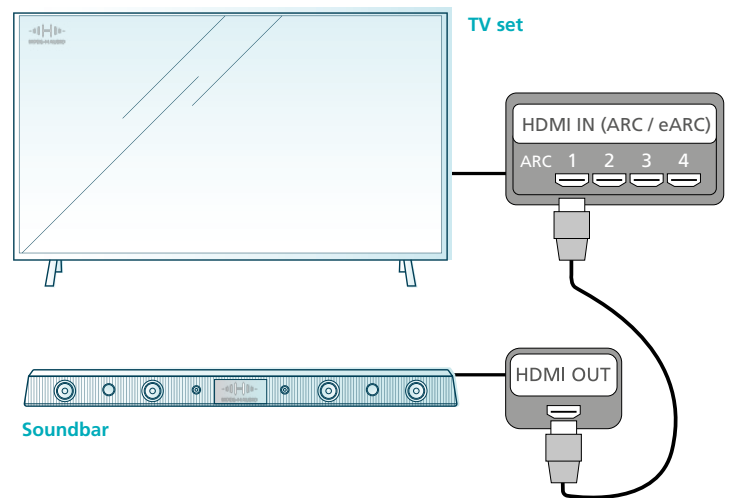
You can play back MPEG-H Audio on your TV speakers, a soundbar connected to the TV, and speakers connected via an AVR.



## HOW TO CONNECT MPEG-H AUDIO ENABLED TV AND SOUNDBAR

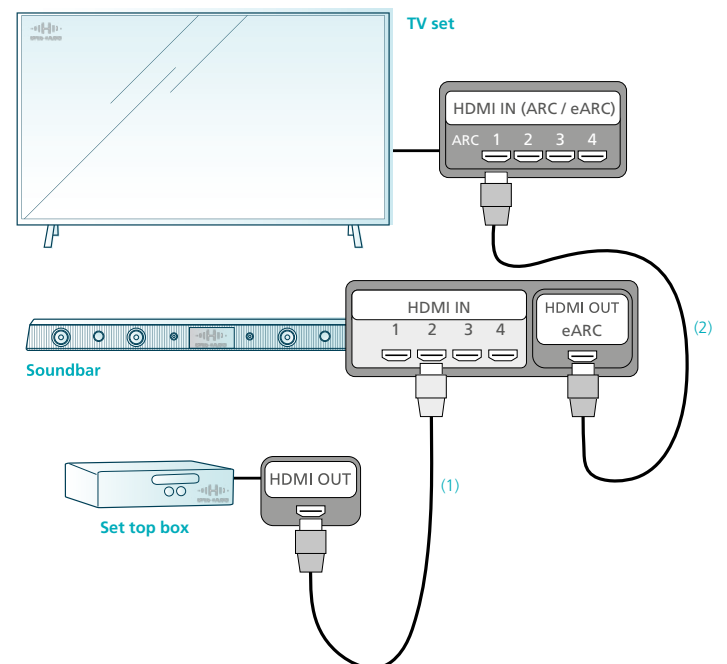
Most soundbars deliver better sound than a TV's internal speakers and sophisticated MPEG-H Audio enabled soundbars can create a realistic immersive sound experience. It is very easy to connect soundbars with the MPEG-H Audio trademark logo directly to your TV. Simply connect your soundbar's HDMI output to the HDMI input of your TV that supports the Audio Return Channel (ARC) and its successor, the Enhanced Audio Return Channel (eARC). In your TV's audio settings, select ARC/ eARC and bitstream output as the audio output options and turn off your TV's internal speakers.

Once your soundbar is connected, all MPEG-H Audio features such as interactivity are automatically controlled by commands sent in the MPEG-H bitstream from your TV. You can interact with MPEG-H Audio features and change the volume with your TV's remote.



## HOW TO CONNECT AN MPEG-H AUDIO ENABLED SET-TOP-BOX TO A SOUNDBAR AND TV

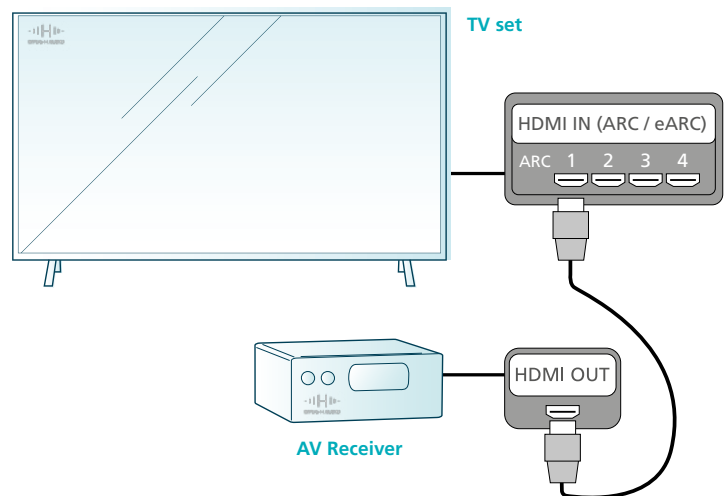
MPEG-H Audio content is frequently played through a set-top-box or a digital media adapter for internet video delivery. Such devices can easily be connected to your soundbar and TV for an enhanced sound experience. Simply connect the HDMI output of your set-top-box directly to an HDMI input of your soundbar, shown as cable (1) in the diagram. Next, link the HDMI output of your soundbar to an HDMI input on your TV, shown as cable (2).



## HOW TO CONNECT AN MPEG-H AUDIO ENABLED TV AND AV RECEIVER

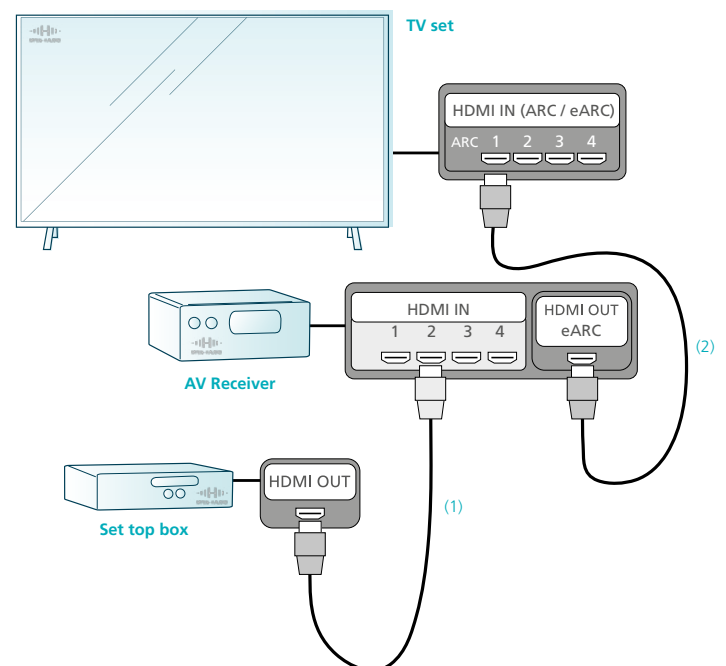
For the ultimate listening experience, you can use individual speakers instead of a soundbar. This requires an MPEG-H Audio enabled AV receiver (AVR) that can easily be connect directly to your TV. Simply connect your AVR's HDMI output to your TV's ARC/ eARC supporting HDMI input. In your TV's audio settings, select ARC/ eARC and bitstream output as the audio output options and turn off your TV's internal speakers.

Once your AV receiver is connected, all MPEG-H Audio features such as interactivity are automatically controlled by commands sent in the MPEG-H bitstream from your TV. You can interact with MPEG-H Audio features and change the volume with your TV's remote.



## HOW TO CONNECT AN MPEG-H AUDIO ENABLED SET-TOP-BOX TO AN AVR AND TV

MPEG-H Audio content is frequently played through a set-top-box or a digital media adapter for internet video delivery. Such devices can easily be connected to your AVR and TV for an enhanced sound experience. Simply connect the HDMI output of your set-top-box directly to an HDMI input of your AVR, shown as cable (1) in the diagram. Next, link the HDMI output of your AVR to an HDMI input on your TV, shown as cable (2).



## NOTE FOR ENTHUSIASTS AND TECHNICIANS

The connection examples above are for simple systems and focused on the playback of MPEG-H Audio content.

They use the Soundbar- and AVR-centric approach to source switching since it is the most common one for simple MPEG-H Audio systems. Users that want to switch sources on their TV and use ARC/ eARC should consult the devices' manuals for information on these more complex systems as well as for applications including optical disc playback and other signal sources or sound formats.

It is possible that equipment does not pass MPEG-H bitstreams from input to output correctly, and it can be necessary to directly connect source devices to AVR or soundbar with HDMI or optical connections.

We provide MPEG-H Audio test signals including channel identification, lip sync, and level checks to verify that the speakers are connected and adjusted properly on <https://mpegh.com/academy/testing-and-qa/>. You will also find loudness test files for several codecs here.

## Contact

### Fraunhofer Institute for Integrated Circuits IIS

Management of the institute  
Prof. Albert Heuberger  
(executive)  
Prof. Bernhard Grill  
Prof. Alexander Martin

Phone +49 9131 776-0  
info@iis.fraunhofer.de

Mandy Garcia  
Phone +49 9131 776-6178  
audio-info@iis.fraunhofer.de

Am Wolfsmantel 33  
91058 Erlangen, Germany